



Tappet Base 1948-84 Big Twin



10-0923



10-0095



42-0902

Chrome Pushrod Cover Set with chrome lifter base covers as a complete dress up kit.



10-0095 Installed



10-8173



10-1325



10-0987



10-0988



10-0113



10-7530



10-7530 Installed

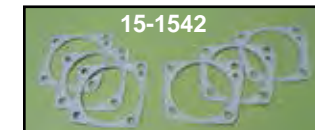
Big Twin Tappet Block fits 1948-83, in chrome or zinc finish. Order seals and gasket kit separately.

VT No.	OEM	Finish	Type
10-0923	Set	Zinc	Panhead
10-0095	Set	Chrome	Set
10-8173	Set	Zinc	Set
10-1325	Set	Zinc	Panhead
10-0987	Replica	Chrome	Front and Rear
10-0988	Replica	Zinc	Front and Rear
10-0113	18610-66	Zinc	Rear
10-7530	Set	Alloy, raw	1948-52
8708-8*	Screws	Chrome	20T 1976-84
8711-8*	Screws	Chrome	24T 1948-75
15-0550	Kit	Gasket	1948-79
15-0551	Kit	Gasket	1979-84

*Note: 12 point style for Big Twin



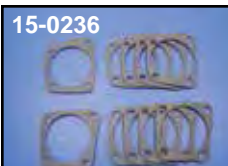
15-0119



15-1542

Tappet Base Gasket for 1949-99.

GB	James	OEM	Type
15-1542	—	Set	Three Front and Three Rear
15-0119	15-0926	18633-48A	Rear
15-0120	15-0927	18634-48A	Front



15-0236

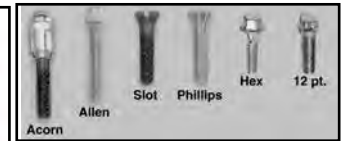
Special Tappet Gaskets. 74 and 80 tappet based gaskets without oil return holes for use in engines with solid lifters five front and five rear. Fit 1941-85 Big Twin.

VT No. 15-0236

8605-16T



8709-8T



Tappet Base Bolt Set for Big Twin models.

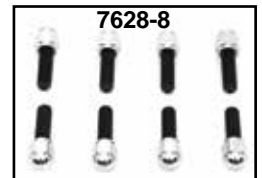
1936-75, 1/4 — 24 Thread with stock lifter blocks

VT No.	Finish	Style
8605-16	Cadmium	Hex
8605-16T	Nickel Plated	Hex without taper
8604-16	Chrome	Hex
8604-16T	Nickel Plated	Hex with taper
8102-16*	Chrome	Slot
8103-16*	Cadmium	Slot
9622-16	Parkerized	Slot
7131-8	Chrome	Acorn
8760-16	Chrome	Allen
2099-16	Chrome	Phillips
2100-16	Cadmium	Phillips

*Note: VT No. 8102-16 has a chrome screw slot, VT No 8103-16 is cadmium and slotted for 1936-53 as stock, can be re-fitted with hex top versions.

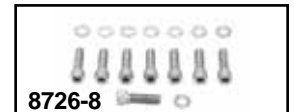
1976-up with Stock Tappet Blocks. 1/4 — 20 thread without taper.

7628-8	Acorn
8726-8	Allen
8709-8	12 point, Cadmium
8709-8T	Nickel Plated, 1/4 — 20 UNC
8708-8	12 point, Chrome
8710-8	12 point, Black



For using late tappet bases, without taper, in early 1936-75 cases with 1/4 — 24 thread.

8712-8	12 point, Cadmium
8711-8	12 point, Chrome
8713-8	12 point, Black
8480-8	Acorn
8727-8	Allen



1/4 — 20 Thread Tapered Screws

for aftermarket cases using pre1976 tappet blocks.

9814-16	Chrome
37-8965	Allen, Chrome
9828-16	Allen, Chrome



8709-8