



Crankcase Set



1970-84
Shovel



10-0029

S&S Crankcase Sets are shipped set up with Timken left side bearing and race assembly, seal and seal spacer, oil pump drive bushing, needle bearing and pinion race for right side, (pressed in and line honed) ready to assemble. Also included are cylinder studs, nickel plated case bolts, crankcase fittings and a timing and magnetic drain plug. Accepts wheels up to 8½" diameter. VT No. 10-0028 Knucklehead cases fit Panhead style frames and later model oil pumps. **Note:** Oil pump required for assembly for stock bore.

VT No.	Year	Bore	Oil Pump
10-0029	1948-64	Stock	12-8001
10-0030	1965-69	Stock	12-8001
10-0003	1970-84 Shovelhead	Stock	12-8002
10-0004	1970-84 Shovelhead	3 5/8	12-8002



10-0290

S&S Alternator-Generator Crankcase Set is shipped with left side bearing race, oil pump drive bushing, cylinder base studs, idler stud, circuit breaker stud, pinion needle bearing and pinion race installed. Pinion race is lined. Honed and ready for assembly. Also included are nickel plated case bolts, crankcase fittings, left side engine bearing, seal and spacer. Accepts wheels up to 8½" diameter.

VT No.	Cylinder Type	Bore	Oil Pump
10-0290	Knucklehead	3 7/16"	12-8001
10-0280	Panhead	3 7/16"	12-8001
10-0034	Shovelhead	3 7/16"	12-8001
10-0044	Shovelhead	3 5/8"	12-8001

Screws

VT No.	Year	Type
8726-8		Lifter Base Screws
37-8519	1955-69	Cam Cover Screws

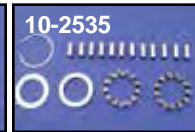


Engine Case Bolt Kit includes the necessary hardware to bolt together the engine cases of the years listed. Available as OEM stock in chrome, cadmium or acorn in chrome.

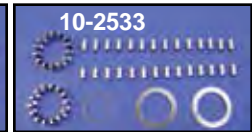
Acorn	Chrome	Cadmium	Fits
8127-34	8128-34	8129-34	1936-39 OHV Big Twin
8130-34	8131-34	8132-34	1940-47 OHV Big Twin
8133-34	8134-34	8135-34	1948-64 Panhead
8136-34	8137-34	8138-34	1965-68 Big Twin
8139-34	8140-34	8141-34	1970-78 Shovelhead
8142-34	8143-34	8144-34	1979-95 Shovelhead & Evo



12-0409



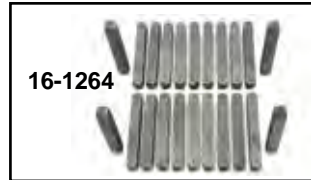
10-2535



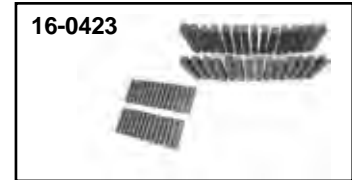
10-2533

Pinion/Sprocket Shaft Cage and Roller Kits include STD size rollers, cages, washers and retaining ring for applications listed.

VT No.	Side	Year
12-0409	Sprocket	1941-54
10-2535	Pinion	1936-54
10-2551	Pinion	1955-57
10-2533	Pinion	1958-69



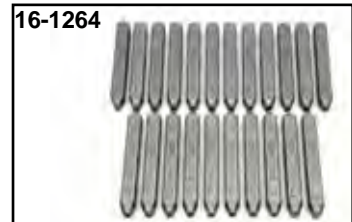
16-1264



16-0423



16-1264



16-1264

Motor Number Stamp Set for FL models.

VT No.	Year
16-1039	1936-47
16-1264	1950-69
16-0423	1970-99



41-0151



41-0152

Gasoila Sealant available in hard setting red varnish or soft set blue/white with teflon. Red Sealant is the original sealer for inside crank cases or cam covers for sealing pin holes on porous surfaces. Blue/White seals threaded joints on pipe threads and fittings. Both types are insoluble in oil, gas and solvents. The ¼ pint can includes brush, each.

VT No.	Item
41-0151	Red Varnish
41-0152	Blue/White soft set

Drain Plugs



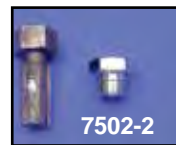
8116-1



8117-1

Engine Case Drain Plug/Oil Pump Body Plug fits Big Twin case 1911-70, oil pump body 1968-84.

VT No.	Finish
8116-1	Chrome
8117-1	Cadmium
9675-1	Parkerized



7502-2

Chrome Oversize Plugs with Tap.

Kit includes a tap and a dome head plug.

VT No.	Type	Includes
7502-2	Engine Drain	Plug and Tap
7503-1	Engine Drain	Oversize Plug
7500-2	Timing	Tap and Plug, Acorn
7501-1	Timing	Acorn Plug, Oversize
9407-1	Timing	Tap