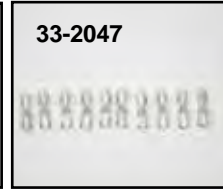




Mini Gauge Kit



48mm Deco or 60mm Mini Speedometer Kits include gauge, chrome bracket, rubber handlebar clamp, and proper cable which can be installed without any adapters or modifications.

48mm Deco	60mm Mini	Ratio	Model/Years
39-0368	39-0315	2:1	1973-95 FX, 1981-84 FL
39-0370	39-0371	2240:60	1981-96 FXST-FLST
39-0598	39-0575	Electric	1995-up FXD 1996-up FXST

48mm Deco or 60mm Mini Tachometer Kits

48mm Deco	60mm Mini	Ratio	Model/Years
39-0367	39-0392*		Electric 3-wire type
31-9997	Fits All		Chrome Y mount
33-2008	Fits All		Light socket with bulb
33-2047	Fits All		12 Volt bulb, 10 pack

Note: For use on 1978-up models with coil triggered tachometer. Green Negative wire goes to negative side of coil. Red wire goes to ignition side of key switch. Tachometer head must be grounded by black wire.

Gauge Billet Housing Kit



Chrome Billet Housing will accept 48 mm electronic tachometer or speedometer.
VT No. 39-0116



Chrome Handlebar Gauge/Clock.

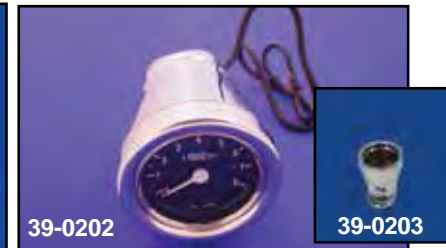
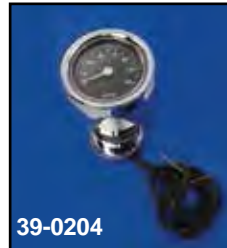
VT No.	Description
39-0785	Clock with White Face
39-0786	Temperature Gauge
53-0871	Battery



Handlebar Clamps allow mounting of all types of necessary items with easy installation, fits 1.25" and 1" diameter handlebars. Available in black or chrome finish. Kits include mounting hardware and reducer for 1" bar applications.

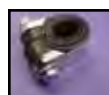


VT No.	Finish
31-0026	Chrome
31-0027	Black



Chrome 60mm Tachometer Housing Kit includes bracket to mount to Softail and FXDWG fork stem bolt, 60 mm electric tachometer, or electric speedometer to fit 1995-up models. Housing which is available separately may be fitted with any 60mm electric speedometer or gauge.

VT No.	Item
39-0202	Tachometer Kit
39-0204	Speedometer Kit
39-0203	Housing Only



Chrome Clamp includes molded rubber insert to attach mini gauges to handlebars for less vibration.
VT No. 28-0325