



1996-up Softail Bobbed Dash Components.

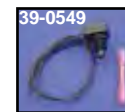
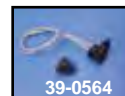
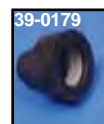
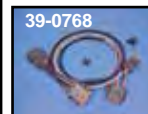
VT No.	OEM	Item
39-0101	71254-96	1996-99 Dash Only
39-0896	Kit	1996-99 Chrome Dash Panel with Switch
39-0987	71250-00	Chrome Dash Panel, 2000-10
Component Listing		
37-0555	7497	Acorn Lock Nut, 1996-up
33-0134	53439-79	Bulb Back Light, 1996-up
39-0453		MPH Speedometer, 1996-03
39-0449	67033-99	MPH Speedometer, 1999-03
28-0139	67190-89	Speedometer Seal, 1989-up
39-0179	67880-94	Reset Switch Boot, 1994-up
33-0137	68024-94	Indicator Lamp Bulbs, 1994-98
39-0180	71302-93	Switch Name Plate, 1994-up
32-0439	71313-96	Ignition Switch, 1996-up
32-0931	72191-94	Terminal, Socket
32-0936	73191-96	Socket Contact



Dash Board Rubber Strip closes the gap between dash and tanks.

VT No.	Fits	Type	Model
28-0543	1968-94	Dash	Big Twin
28-0554	1988-92	FXRS	FXR
28-0540	1977-84	FXS Type	FX

Dash



Speedometer Reset Knob fits 1998-up models. Replaces 67854-98.

VT No.	Item	Model
39-0767	Harness	1995-98 FXST, FLST 1996-97 FXDWG
39-0768	Harness	1995-98 FL
39-0787	Harness	1998-99 FXDWG
39-0549	Reset Knob	All
39-0179	Reset Knob Boot	All
39-0564	Reset Knob Kit	All

Speedometer Sensor



Programmable Transmission Speedometer Sensor is a fully adjustable sensor assembly for all 5 and 6 Speed transmissions with electronic drive speedometer. It allows fast and accurate adjustments for any tire size, pulley size on gear ratio change. **VT No. 36-0150**



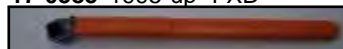
Speedometer Calibrator **Corrects** readings of stock electronic speedometers when using oversized rear tires or when other drive train modifications have been done that effect final drive ratio. Use on all Big Twins.

VT No.	Brand
36-0250	S&S
36-0422	V-Twin



Electronic Speedometer Sensor Unit.

VT No.	Years	Model
17-0561	1996-99	FXST
17-0582	2000-up	FXST
17-0585	1995-up	FXD



Speedometer Sending Unit Wrench features a shortened 3/16" ball end hex bit for removal or installation of hex screws used on all Big Twin models equipped with electronic sending units.

VT No. 16-6738



Chrome Speedometer Sensor Block-Off Plate Kit includes plate, gasket and mounting screw for 1996-up Softail.

VT No. 17-0234