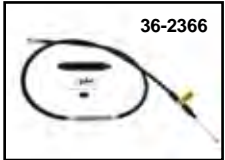
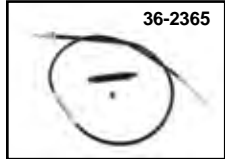
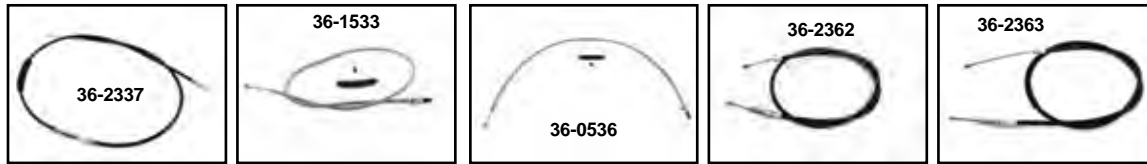
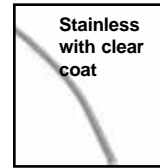




Clutch Cable



Clutch Cables feature heavy duty construction designed for reliability and longer service. By V-Twin or Barnett in black vinyl or braided stainless covering. ***Note:** Uses eyelet style end. Hand lever pin is supplied.

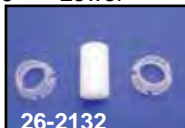
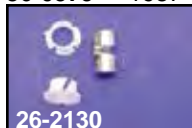
Big Twin Clutch Cable Assemblies

V-Twin Black	Barnett Stainless	Barnett Stainless with Clear Coat	Barnett Black	OEM	Fits	Casing Length
—	—	36-1530	36-2362	38599-83A	Stock 1984-86 FXRS-FXRT-FXR	54"
—	—	36-0694	36-2363	38605-86A	Stock 1986 FXST 5 Speed	54.25"
—	—	—	36-2364	38611-86	Stock 1986 FLST 5 Speed	48.75"
—	—	36-0696	36-2365	38606-87	Stock 1987-94 FXR-FXRS-FXRT	64.75"
—	—	36-1531	36-2366	38607-87	Stock 1987-06 FLT-FXST-FXSTC-FLST	63"
—	—	—	—	—	2" Extension, As Above	65.25"
—	—	—	—	—	4" Extension, As Above	66.50"
—	—	—	—	—	6" Extension, As Above	69.25"
—	—	36-1532	36-2369	—	8 Extension, As Above	71.375"
—	—	—	—	—	10" Extension, As Above	74.50"
36-2537	—	—	—	—	12" Extension As Above	75.25"
—	—	—	—	—	16" Extension, As Above	79"
—	—	36-0699*	36-2479*	36753-87	Stock 1988-94 FXLR	61.875
—	—	—	36-2488*	36755-87A	Stock 1987-94 FXRSE	57.75
—	—	36-1533	36-2509	38601-89	Stock 1989-06 FLT	63"
—	—	36-0536	36-0535	38602-92	Stock 1992-05 FXDL-FXDWG-FXDB	69"
—	—	—	36-0538	38617-95	Stock 1995-97 FXSTSB	60.75"
—	36-0758	—	36-0759	38647-98	Stock 1998-06 FXSTSB	57"
36-1150	—	—	—	38667-07	Stock 2007-up FLT	62.51"
36-1151	—	—	—	38789-06A	Stock 2006-up FXDWG	68.81"
36-1152	—	—	—	38666-07	Stock 2007-up FXST	64.75"
36-1153	—	—	—	38664-07	Stock 2007-up FXSTD	62.66"
36-1154	—	—	—	38787-06A	Stock 2006-up FXD	64.57"
36-1155	—	—	—	38788-06A	Stock 2006-up FXDL	65.66"



Chrome Clutch Cable Adjuster Cover fits 1987-up Big Twin. Installs over adjuster at clutch adjustment cover. Locks in place with stainless steel set screw. Will retro fit Barnett or stock cables.

VT No.	Type	Style
36-0578	1982-up	Upper
36-0579	1987-06	Lower



Lever Pins/Bushings

VT No.	OEM	Item	U/M
26-2130	45032-82	Pin 1982-84	10
26-2132*	45036-88	1988-up with Bushings	Each
36-2559	45423-92	Lever Bushings	10

***Note:** Teflon pin fits 1988-up eyelet clutch cables



Braided Cable Heat Shrink Tubing.

Clear heat shrink tubing for use on all braided stainless steel cables to prevent cable from scratching painted or chromed surfaces while still keeping that braided steel look. Kit contains 4-16" long heat shrink tubes to cover 2 throttle cables, 1 clutch and 1 speedometer cable. Bulk tubing is in a 10 foot roll.

VT No.	Item
40-0015	Cable Sleeve Kit
40-0019	3/8" x 10' Roll
40-0020	1/2" x 10' Roll
40-0021	3/4" x 10' Roll



Cable Clamp is fitted to hand lever for emergency or permanent use. Easy to install .460" diameter, pair.

VT No. 26-0509