



# Intake Adapters & Seals



**35-9150** CV Carburetor Adapter Flange is 2 bolt early style type without seal.  
VT No. 35-9150



**Manifold Spacer** replaces 29250-78 on 1971-88 models. 3/8" thick.

VT No.	Item
15-0141	Stock Spacer, each
15-1019	As Above, James
15-0142	Gaskets, Non-beaded
15-1144	Gaskets, Beaded
15-1019	Spacer Kit, James (1 3/4" inner diameter) Stock
15-1162	Spacer Kit, James (1 3/4" inner diameter) Custom



**Carburetor Spacers** for S&S are available in 1" or 3/8" thickness for spacing out 1 7/8" carburetors on models with 5 gallon tanks.

VT No.	Size
35-0105	1"
35-0086	3/8"

## Bendix 40 mm



**Zenith 40mm Performance Spigot Mount Carburetors Kit** for all 1984-up Evolution and Twin Cam models with dual cable operation. Features adjustable main jet, butterfly type choke, spigot mounting and acceleration pump. Use stock type cables and air cleaner. Comes complete with all fittings, adapters and instructions. Kits sold as shown.

VT No.	Finish
35-0023	Standard
35-0024	Chrome



### Carburetor Adapters.

VT No.	Carb Size	Type
35-9136	36-45 mm	Spigot Rubber
35-0117	42 mm	Spigot Rubber
35-0194	40-44 mm	Spigot Rubber
35-4574	36-38 mm	Flange Adapter
35-9162	42 mm	Flange Adapter
35-9340	42 mm	Flange Adapter
35-9341	46 mm	Flange Adapter
35-0098	38 mm	2 Bolt Adapter with rubber
35-0088	38 mm	2 Bolt Adapter

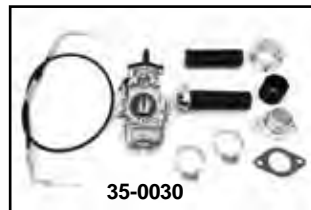


### Intake Manifold O-Rings and Seals.

James	VT No.	OEM	Type
14-0624	14-0165	26995-86A	1986-up
14-0573	—	As Above	Blue silicone
14-0678	—	As Above	Oversize
14-0689	—	As Above	Rubber with metal element Standard Size
14-0708	—	As Above	Rubber with extra thick metal insert standard size
14-0625*	14-0180*	27002-89	1990-up Big Twin
—	14-0690	—	2000-up with electronic fuel injection, 44mm
—	14-0691	—	1999-up TC-88

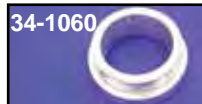
\*Note: Seal for carburetor to intake manifold.

## DELL'ORTO



**Dell'Orto Pumper** features adjustable accelerator pump and choke. Kit includes throttle assembly, cable, grips, air cleaner adapter and carburetor adapter to fit stock 2 bolt or Shovelhead manifolds on pre 1985 models.

VT No.	Item	Model
35-0030	38mm Complete Kit	Shovelhead
35-0031	40mm Complete Kit	Shovelhead
35-0053	38mm Complete Kit	Panhead
35-0238	38mm	Carburetor Only
36-2550	Throttle Cable	



**Dell'Orto Pumper Air Cleaner Flat Adapter** allows use of Bendix air cleaners.  
VT No. 34-1060



**Dell'Orto Spigot Carburetor Adapters.** O-Ring seal with steel flange.  
VT No. 35-9076