



# Hitachi Type Starter Motor

1.4 kw  
32-7761



**Hitachi Type High Torque Starter Motor** features 1.4 kw design that generates more power and shaft speed than original type .8 kw starter.

**32-5122** Black  
**32-5123** Chrome

**Hitachi Type Starter Motors** are replicas for 1974-88 FXE, 1982-84 FL, 1983-88 FXR-FLT and 1984-88 FXST. Parts interchange with original, 5" overall body length.

VT No.	OEM	Item
<b>32-1307</b>	31570-73	Complete, Black
<b>32-7760</b>	31570-73	Complete, Black
<b>32-7761</b>	31570-73	Complete, Chrome
<b>32-0306</b>	31580-73	Armature
<b>32-0307</b>	31582-73	Brush Set
<b>32-0308</b>	31579-73	Field Coils
<b>32-0059</b>	31576-73	Thru Bolts
<b>12-0347</b>	31583-73	Bearing, Drive End



**Hitachi Starter Hardware Kit** includes brushes, holder, springs, thru bolts and insulator commutator end bushing for 1973-88 Big Twin.

**VT No. 32-0553**

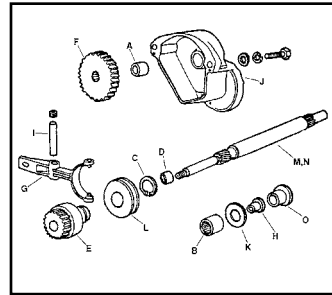
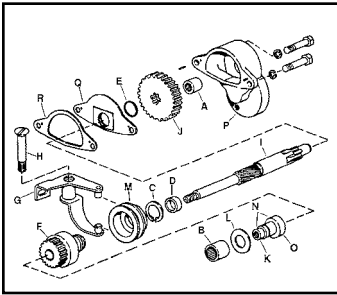


**Springs** for Hitachi Starter Motors. Replace 31600-90. 1991-up starter clutch assembly. **VT No. 13-9220**

## Starter Motor Housing, Shafts and Gears

1984-85 FXST

1984-88 FLT, 84-88 FXR, 1986-88 FXST



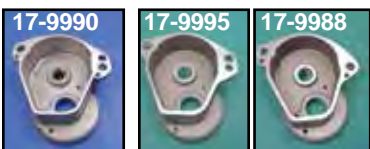
### Starter Related Hardware.

VT No.	OEM	#	Item
<b>43-9160</b>	Kit	1	Complete
<b>12-0317</b>	9062	A	1984-85 Housing Needle Bearing Housing
<b>12-0318</b>	9063	B	Needle Bearing Cover
<b>12-0934</b>	11039	C	1984-88 Retaining Ring Collar
<b>17-0088</b>	11041	D	1984-85 Starter Shaft Spacer
<b>14-0501</b>	11101	E	1984-85 O-Ring Deflector Plate
<b>32-0639</b>	31443-65A	F	1984-88 Starter Drive Gear
<b>17-1507</b>	31445-65	G	1984-E85 Shift Lever Starter Gear
<b>17-1506</b>	31478-65A	H	1984-85 Pivot Bolt Shifter Lever
<b>17-0085</b>	31482-70	I	1984-85 Starter Shaft
<b>17-1508</b>	31485-65	J	1984-85 Starter Shaft Gear
<b>17-0081</b>	31485-65	K	1984-85 Starter Shaft Nut
<b>17-1504</b>	31502-65	L	1984-88 Thrust Washer Chain Cover
<b>17-1505</b>	31503-70	M	1984-85 Shifter Collar
<b>17-1502</b>	31503-65	M	1965-69 Shifter Collar
<b>17-0084</b>	31530-65A	N	1984-85 Starter Shaft Nut and Spacer
<b>17-9936</b>	31531-69	O	1984-85 Starter Shaft Spacer
<b>43-9122</b>	31572-79	P	1984-85 Housin
<b>17-0509</b>	60516-65A	Q	1984-85 Deflector Plate
<b>s15-1064</b>	60559-80	R	1984-85 Plate Gasket



**Starter Related Hardware.** Kits includes A, B, C, D, E, F, G, H, I, J, K, L, and M.

VT No.	OEM	Item
<b>43-9161</b>	Kit	FXST 1986-88
<b>43-9166*</b>	Kit	FXST 1985-88
<b>17-0240*</b>	Kit	FXR 1984-88
<b>12-0317</b>	9062	A Needle Bearing Housing
<b>12-0318</b>	9063	B Needle Bearing Cover
<b>12-0934</b>	11039	C Retaining Ring, Collar
<b>32-0638</b>	31443-65A	E Bendix Drive
<b>17-1508</b>	31485-65	F Gear 1980-85
<b>17-9938</b>	31340-80	F Gear 1985-88
<b>17-0965</b>	31491-79	G Shift Lever, FLT, Steel
<b>17-9773</b>	31300-84	G Shift Lever, Starter FXST
<b>17-0081</b>	31493-67	H Nut for Shaft
<b>17-9987</b>	31495-79	I Pivot Pin FLT-FXR
<b>17-9875</b>	31473-86	I Pivot Pin FXST
<b>17-9990</b>	31497-83	J Housing, 1983-85 FLT/FXR
<b>17-9995</b>	31572-86	J Housing, 1986-88 FLT/FXR
<b>17-1504</b>	31502-65	K Thrust Washer
<b>17-1502</b>	31503-65	L Shift Collar
<b>17-9983</b>	33120-79	M Starter Shaft, 1980-84 FLT-FXR
<b>17-9944</b>	33120-85	M Starter Shaft, 1985-88 FLT-FXR
<b>17-9939</b>	31482-86	M Starter Shaft, FXST
<b>17-9984</b>	33121-79	O Spacer, Shaft, FLT-FXR
<b>17-9985</b>	31311-80	O Spacer FXST



**FLT/FXR Starter Housings.** Order bearing separately.

VT No.	Year
<b>17-9990</b>	1983-85
<b>17-9995</b>	1986-88
<b>17-9988</b>	1980 only

\*Note: Order appropriate housing to complete assembly.