

1985-94 FXR Exhaust



30-0768



30-0769

2:1 Side Exhaust Lake Side Pipes with a 5" turn out end fits 1986-94 FXD-FXR-FXST with forward controls.

VT No. Style
30-0768 Chrome
30-0769 Black



Chrome 2 into 1 Exhaust Pipe Head. Single type fits 1984-94 FXR-FXRS.
VT No. 29-1145



Clamp Set for 1982-94 FXR, 1991-up FXD pipe.
VT No. 31-0556



30-3395



30-3144

Chrome Exhaust Pipes fit Evolution engine FXR-FXRS-FXLR, except Dynaglide. Feature a true one piece construction. Designed to be used with stock flange rings, gasket, clamps and hardware. Mounts to stock bracket with concealed mounts.

VT No. Style
30-3395 2 1/4" Drags
30-3144* 1 3/4" Goose Drags
***Note:** Use 31-2101 Mount Clamp

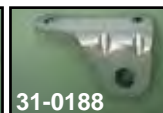
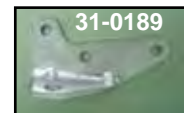


Exhaust Bracket Mounting Block fits all 1982-86 FXR models and replaces 65780-82, Sold each. **VT No. 28-0229**



T-Bolt Set is a replacement for all of our muffler pipes which have channel type mounting. Supplied with nut.

VT No. U/M
31-2116 Pair
31-0223 10 pack



Exhaust Pipe Brackets, zinc plated.

VT No.	OEM	Type
31-0189	65670-82	Front
31-0188	65671-82	Rear

Emissions and Noise Regulations Important Information:

Disclaimer: The California Air Resources Board (CARB does not permit the use of aftermarket emission-related parts) that alter the performance of OEM emission-related devices unless CARB has issued an executive order, other than on racing vehicles on closed course. Check your local laws and manufacturer's information.

Disclaimer: Emission related parts for OEM Non-emission control system equipped motorcycles as well as slip on mufflers that mount downstream of and which do not alter the performance of OEM emission-related devices, are considered legal replacement parts by CARB. More California exhaust information is available a www.arb.ca.gov.

Disclaimer: Aftermarket products, including but not limited to exhausts, fuel, air controllers, air filter kits, camshafts and carburetors and jet kits which alter, modify, or replace emission control devices or systems of an originally compliant highway motorcycle, are not legal for sale or street use in California unless they have been issued a CARB Executive Order. Aftermarket emissions related products which have not been issued an Executive Order or which are not aftermarket Replacement Parts, as defined in Title 13, California Code of Regulations, Section 1900 (b)(2), are authorized for closed circuit race use only. Products shown may be designed, manufactured, intended and sold for closed circuit race use only and use of the same on public roads or lands may be a violation of local, state and/or federal laws. See manufacturer's information and state and local laws to determine what is authorized for your use on your vehicle.

Disclaimer: Products shown may not conform to federal, state or local noise regulations.

Warranty

Disclaimer: There is no warranty on exhaust pipes and mufflers with regard to any discoloration. Discoloration (blueing) is caused by tuning characteristics, i.e. cam timing, carburetor, etc. and is not caused by defective manufacturing.

Disclaimer: Check your applicable laws and manufacturer's publication(s) and/or website(s) for manufacturer's warranty, maintenance, safety, mounting and any regulatory compliance/non-compliance information.



Important Note: Some items on this page may be emission-related parts subject to California or other emission control laws. Please see note on page 71 for important information regarding emission control regulatory compliance and warranty information.

