

Forward Controls on this page use existing master cylinder.



22-0509 Left



22-0561

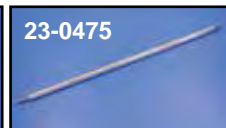


Dynaglide Chrome Forward Control Kit. The stock control kit (22-0509) will move mid mount controls on 1991-05 Dynaglide models to the forward position and can be used as stock replacement on 1993-02 FXDWG. The 2" extended control kit (22-0510) will move mid mount controls on Dynaglide models to the forward position and can also be used on FXDWG for increased leg room. Order foot rest and shifter pegs separately.

2006-up	1991-05	Item
22-0517	22-0509	Control Kit, Stock
22-0561	—	Control Kit, Stock, Black
—	22-0510	Control Kit, 2" Extended



27-0759



23-0475

Dyna Wide Glide Chrome Forward Control Extension Kit allows stock forward control pedals to be moved 2" forward for extra leg room. Kit includes two chrome extension plates, chrome extended shift rod and chrome extended brake rod. Installation requires utilization of stock brake and shifter pedal components.

VT No.	Year	Item
27-0759	2006-up	Kit
23-0475	1992-02	Brake Rod Only

*Note: 2003/2004/2005 OE Style Replacement



23-9191



23-0850

Chrome Brake Rods fit FXDWG models.

VT No.	OEM	Year
23-9191	41955-93	1993-02
23-0850	41955-03	2003-up

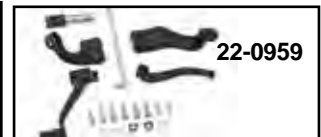


Chrome Billet Forward Brake Pedal features forged aluminum construction with milled slots. Fits 2003-up FXDWG.
VT No. 23-0478

Forward Control for FXD-FXDWG



22-0956



22-0959

Forward Mid Control Sets . Comfortable as slightly more forward than stock 2006-up FXD with mid controls and 2014-up FXDL.

VT No.	Finish
22-0956	Chrome
22-0959	Black



22-0770 Right

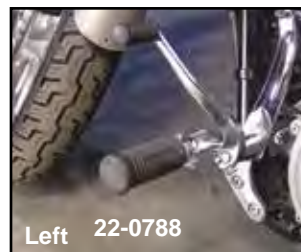


22-0770 Left

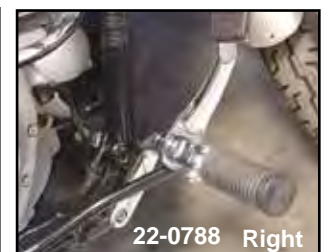
Note: Shifter Rod Position for Installation

Chrome Billet Forward Control Set fits 1991-05 FXD. Includes rubber belted pegs as shown, and includes left and right sides. Order shift rod separately. This kit will utilize stock master cylinder in the original position. Rod included fits directly to master cylinder.

VT No.	Item
22-0770	Set
21-0222	Shifter Rod



Left 22-0788



22-0788 Right



22-0788

Forward Control Kit fit 2006-up FXD. It uses existing master cylinder linkage and footpegs.

VT No.	Type
22-0788	Replica without soft pegs
22-0794	Replica with soft pegs and without gaskets

22-1679* Short Reach Adapter Kit
*Note: Move stock FXDWG for controls 1" closer to rider and can be used on FXD models when 22-0788 or 22-0794 are installed for reduced reach.