



# Footboard Kit for FXD



Left Side



Right Side

Wyatt's Footboard Kit for FXD is designed for use on all 1996-up FXD models. It features the same style used on all touring models to maximize rider comfort. The kit comes complete with footboards and mounts, brake pedal, an extended brake rod and a one piece chrome heel toe shifter, mounting hardware, toe shifter and mid shift retainers. Cannot be used with engine guards.

VT No.	Item	Fits
27-0920	Kit	1995-05
22-0453	Kit	2006-up
23-0289	Pedal	
27-1011	Board	
21-0793	Shifter	
51-0434	Engine Bar	



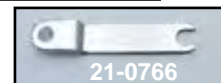
Left Side Installed



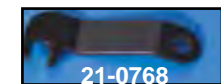
Right Side Installed



Chrome Engine Bar features 1/4" tubing.  
VT No. 51-0434



21-0766



21-0768

**Mid Shift Lever Retainers** will secure inner primary shift lever when installing forward controls.

VT No.	Year
21-0766	1991-05
21-0768	2006-up



51-0434 installed with 27-0920



21-0768 Installed



**Reduced Reach Forward Control Conversion Kit** fits 2006-up with mid controls. Kit includes left and right supports, brake and shift lever, brake and shift linkages. This moves the rider's feet 10" forward from the mid control position.

VT No. 22-0226