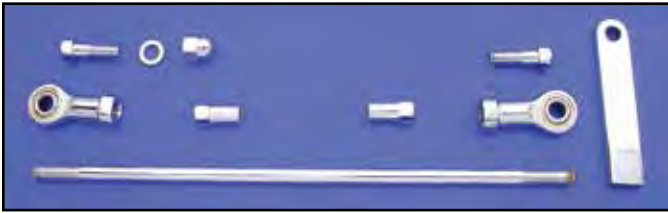




# Shifter Rod Kit for ST

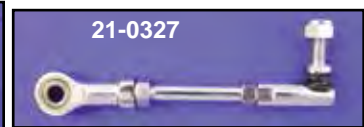
Complete Chrome Shifter Rod Kits as listed below include rod and ends.

## FXD-FXDWG Shifter Rod Kits



**Chrome Shifter Linkage Kit** replaces original shift linkage on 2000-up Softail models and 1980-up FLT-FLHT models and replaces 33814-98A.

VT No.	Type
21-0502	Kit
21-0791	Rod Only



### Shifter Rod Sets.

VT No.	Year	Model	Finish
21-0322	1991-05	FXDWG	Chrome
21-0327	1991-05	FXD	Chrome
21-0328	1991-05	FXD	Zinc
21-0300	1991-05	FXD	Stainless Steel
21-0338	2006-up	FXDWG	Chrome

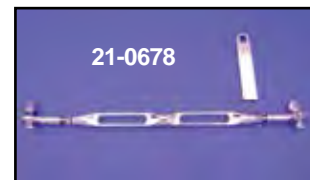
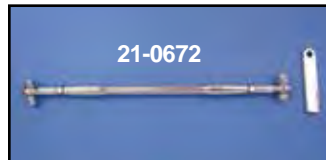


**Billet Twisted Shifter Linkage** fits 1986-up Softail.  
VT No. 21-0228



**Chrome Shifter Arm and Linkage Kits** include inner arm, inner shifter lever, rod with ball and swivel ends.

VT No.	Model
21-0500	1986-up FXST
21-0501	1990-up FLST



**Chrome Billet Shifter Rod Kits** includes heim joint ends. Stock length rod is 10<sup>5</sup>/<sub>16</sub>" long.  
VT No. Length  
21-0672 Stock  
21-0678 Stock  
21-0223 Extension +2"

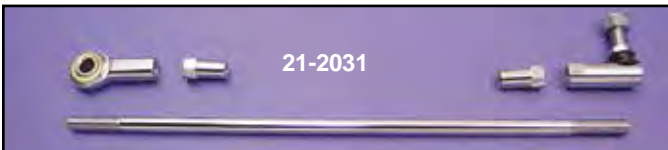


**Chrome Shifter Rod Kit** fits 1980-up FLT and 2000-up Softail.  
VT No. 21-2039



**Chrome FXST Shifter Linkage** includes transmission arm cover, rod, two swivel ends and nuts. Parts sold separately.

VT No.	#	Item
21-2060	A, B, C, D	Rod Kit with cover
21-2031	B, C, D	Rod Kit only
42-0722	A	Arm Cover only
21-2022	B	Rod only
21-2020	C	Swivel End
21-2023	D	Ball Joint End
21-2028	E	Inner Lever



**Chrome Shifter Rod Kit** fits 1985-99 FXST-FLST.

VT No.	Item
21-2031	Kit
21-2022	Rod Only

## Shifter Rods

**Straight Shifter Rods** are 5/16" diameter with 5/16" x 24 thread at each end. \*Note: Offset

VT No.	Length	Finish
21-0324	3 <sup>5</sup> / <sub>8</sub> "	Chrome
23-0252	7 <sup>3</sup> / <sub>4</sub> "	Chrome
23-0934	8 <sup>1</sup> / <sub>4</sub> "	Chrome
23-0253	10 <sup>1</sup> / <sub>2</sub> "	Chrome
23-0255	11"	Stainless Steel
21-0546*	11 <sup>1</sup> / <sub>4</sub> "	Chrome

VT No.	Length	Finish
21-0330	11 <sup>3</sup> / <sub>4</sub> "	Chrome
21-2022*	12"	Chrome
21-0321	12"	Chrome
21-0333	12 <sup>1</sup> / <sub>2</sub> "	Chrome
21-0334	13 <sup>1</sup> / <sub>2</sub> "	Chrome
23-0257	14 <sup>1</sup> / <sub>2</sub> "	Chrome
21-0332	20 <sup>1</sup> / <sub>4</sub> "	Chrome



**Chrome 5/16" Shifter Rod Extension** with male and female ends.

VT No.	Length
21-0270	2"
21-0271	3"