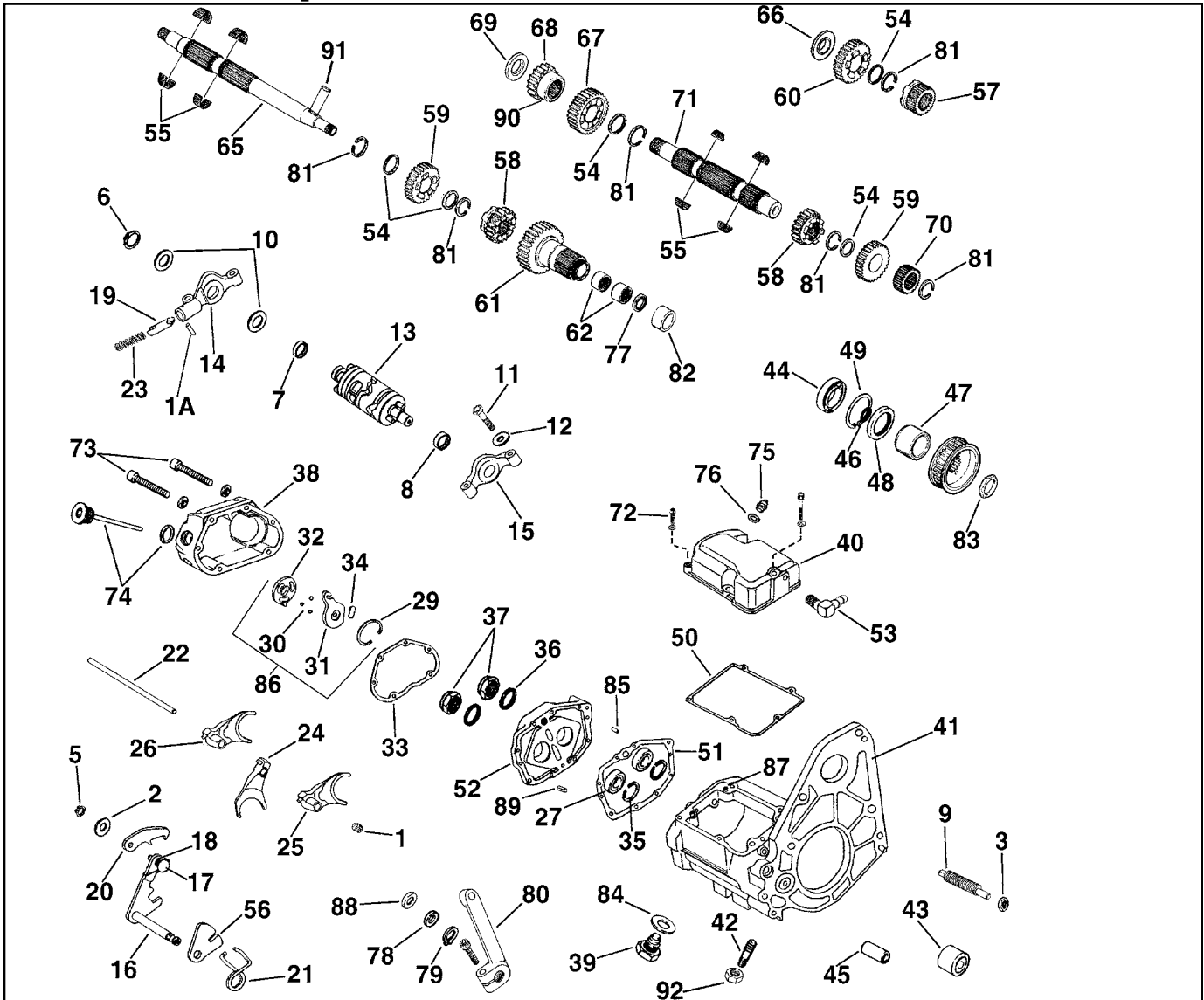




5-Speed Transmission Parts



Shifter Parts



Chrome Steel Inner Shifter Lever
Includes stainless allen screw and washer.

VT No.	Speed
17-0966	5
17-0968	6

This V-Twin part is a steel forging. In this process, the steel is first fired as a red hot ingot. Next a huge air hammer compacts and orients the grain structure into a rough shape of the part. Subsequent hits form the part into its final shape. After which it is machined and heat treated which results in greater strength and resistance to wear. V-Twin supplies many products which are of forged construction, including connecting rods, frame components and kicker arms.



5-Speed Big Twin Transmission Shift Pawl Assembly
includes shift shaft with lever, pin, lever and shaft springs and pawl as pictured.

VT No.	Brand	Year
17-0576	V-Twin	1986-01 Softail, 1986-2000 FLT, FXD
17-0590	Sifton	1986-01 Softail, 1986-2000 FLT, FXD
17-0596	Sifton	1989-2005 Big Twin
17-0604	Sifton	2002-2006 FLT
17-0605	Sifton	2006-up FXST



Billet Shift Arm fits 5 and 6-Speed Big Twin transmission.
VT No. 17-0666



5 Speed Shifter Fork Set
fits 1986-06 FXST.
VT No. 17-8391