



# Oil Filter



**Spin-On Oil Filters** replaces stock units in chrome or black, Perf-form or V-Twin Brand in stock or with hex nut style. Perf-form Tall Chrome Filter is 3/4" longer than stock and will not fit fuel injected models. All filters listed are low restriction type.

Hex	VT No.	Perf-form	OEM	Finish	Length	Year
40-0857	40-0711	40-0363	63782-80T	Chrome	2.5	1980-E84
40-0871	40-0710	40-0379	63810-80T	Black	2.5	1980-E84
40-0860	40-0708	40-0378	63805-80T	Black	3.75	1984 1/2-up
40-0872	40-0709	40-0362	63796-77T	Chrome	3.75	1984 1/2-up

**Note: Chrome & Black Spin On Filters** are 3" OD.



**Fram Spin-On Oil Filters.**

Chrome	Black	OEM	Fits	Lgth
40-0725	—	63782-80	80-E84	2.5"
40-0726	40-0717	63796-77A	84-up	3.75"



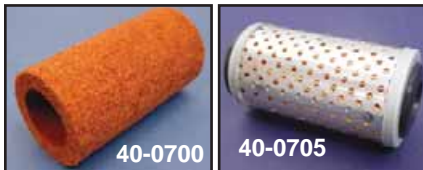
**K&N Spin-on Oil Filters** are available in chrome or black finish and feature hex nut end for easy removal and installation, improved pressure relief valve and anti-drain back valve.

VT No.	Finish	Fits	Length
40-1720	Chrome	1980-84	2.5"
40-1710	Chrome	1984 1/2-up	3.75"
40-1711	Black	As Above	3.75"



**Perf-Form Filter Unit** is a complete drop-in replacement. 1954-78 XLH. Spring included.

**VT No. 40-0380**

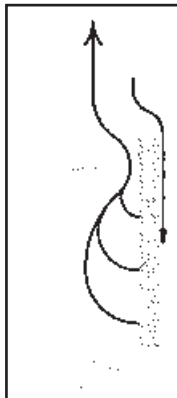


**Oil Filter Elements** are original style. Fit 54-78 XLH models. Replaces 63888-53.

VT No.	Type
40-0700	Felt
40-0705	Metal Perforated
40-0720	Fram



40-0865 with nut



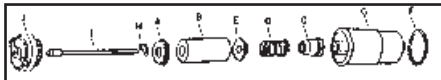
Oil flows in around the outer diameter, through the filter media and out passing by the magnet. The magnet captures particles less than 10 microns which could have escaped through the filter wall.

**Magnetek™ Oil Filters** feature a magnetic ring in center tower to trap particles less than 10 microns which could have escaped thru the filter wall.

Hex	VT No.	OEM	Fits	Lgth
40-0865	40-0851	63782-80	80-E84	2.5"
40-0864	40-0852	63796-77	84 1/2-up	3.75"

5-Spd XL

## 1954-78 Filters



**Oil Filter Hardware** for 54-78 XL models.

VT No #	OEM	Item
40-0714	Kit	A-B-C-D-E-F-H
40-9953	Cpt. Kit	As Above w/cup (G)
40-9954	G	63826-53 Cup
40-0700	B	63839-53 Filter Element, 12 pc
40-0122	E	63846-67 Lower Washer
13-0207	D	63831-67 Spring, 10 pk
40-0125	A&C	63881-67 Upper Seal Kit
		63882-67 Lower Seal
14-0526	F	63879-53 O-Ring, 10 pk
12-0940	H	63878-53 Clip 10 pack
40-9955	I	63885-65 Dipstick
40-0504	J	62610-52A Chrome Cap Assembly



**OE Spin-on Oil Filters** feature a cured black resin impregnated paper that will remove foreign particles from oil. Fits 1979-84 XL, 2.5" long.

VT No.	OEM	Finish
40-0752	63810-80A	Black
40-0753	63782-80	Chrome



**Oil Filter Wrench** fits all spin on filters. 3/8" drive.  
**VT No. 16-0743**



**Drop In Filter Unit** includes spring, O-ring and one piece filter.  
**VT No. 40-0172**



**VT No. 40-0714** includes internal components A-H as illustrated.