

**18-0673**  
**Hydraulic Clutch Handle Kit** includes chrome handle assembly, chrome transmission side cover, rod and line. 18-0673 includes hydraulic handle which fits 1" bars. Fits 1999-04 FLT and 2000-05 ST.  
**VT No. 18-0673**

# Hydraulic Clutch



BIG TWIN



**1999-up TC-88 Hydraulic Clutch Kit.** Order line separately. Fits 1" and 1.125 bars.  
**VT No. 18-0562**

## Clutch Control



22-0377



22-0378



26-0590

**Chrome Smooth Contour Control Kit** features a hidden underside mounting on the switch housings for an unobstructed smooth, rounded surface on the top housing. Switch housings use stock or chrome rounded switches (introduced on 1996 models). Complete kits include clutch and brake levers, master cylinder, hydraulic clutch, switch housings, brackets and hardware. Master cylinder is 11/16" bore, hydraulic single disc. Clutch handle is 11/16" bore.

| VT No.  | Style     |
|---------|-----------|
| 22-0377 | Milled    |
| 22-0378 | Contour   |
| 26-0590 | Lever Set |



22-0879

**Custom Hydraulic Control Kits** will utilize 1996-up switches. Both feature 9/16" master cylinders. Matching throttle housing spacer for left side included.  
**VT No. 22-0879**



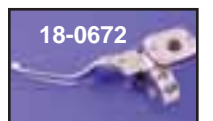
18-0675 Installed



18-0675



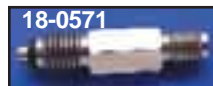
18-0362



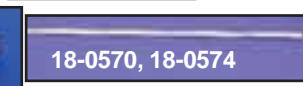
18-0672



18-0579



18-0571



18-0570, 18-0574



18-0570

### Components

- 18-0672 Complete Hydraulic Handle
- 18-0362 Cover Only 1999-up TC-88
- 18-0675 Cover Only 1987-05
- 18-0676 Cam Cover, 2006-up 6 Speed
- 18-0570 Clutch Rod 1999-up 15.25"
- 18-0571 Hydraulic Clutch Fitting
- 18-0579 Throw-out Bearing Kit
- 18-0572 Clutch Rod, 1987-05 15.5" Long
- 23-1715 Rebuild Kit for 18-0672