

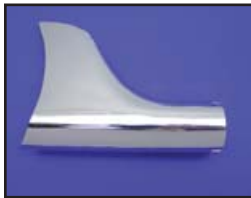


Fishtail Exhaust Extensions



Chrome Fishtail Straight Pipes fit over 1 3/4" pipes and have an O.D. of 1 7/8". Sold each except where noted. Order clamps separately.

VT No.	Item
30-0138	18" Fishtail Ext.
30-0945	18" Set
30-0139	30" Fishtail Ext.
30-0948	30" Set
30-0136	36" Fishtail Ext.
30-0518	36" Set
30-0950	36" Set
31-2105	1 7/8" Hanger Clamps
31-2103	1 7/8" End Clamps

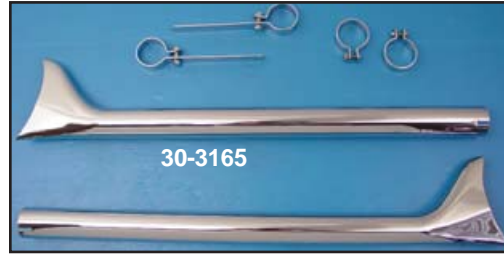


Chrome Classic Fishtail Tips slip over the outlet of the muffler or straight pipe. Available 1 3/4" inlet diameter. Tip measures 7 1/8" long and 5 5/8" high.

VT No.	U/M
30-0197	Each
30-0974	Pair



Batique Pipe End fits over 1 3/4" exhaust tube. Sold each.
VT No. 30-0793



V-Twin Mfg.™ Fishtail Kits include two (2) fishtails, two (2) inlet and two (2) body clamps. Pipes are 1 3/4" inside diameter the

full length of fit over drag or dual exhaust systems. Fishtails do not include baffles.

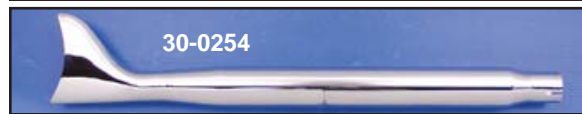
VT No.	Length
30-3165	30"
30-0137	36"

Mufflers



Chrome Fishtail Style Mufflers are 2 7/8" diameter, with steel baffle core. Inlet end fits 1 3/4" OD pipes. Order clamps separately.

VT No.	Type
30-0151	30", each
30-3185	30" Set includes 31-2099 clamp set
30-0152	36", each
31-2103	1 7/8" end clamp
31-2144	1 7/8" end clamp, heavy
31-2099	2 7/8" body clamp



Chrome Tapered Fishtail Muffler features 1 3/4" inlet. Use 2 1/2" body clamps for mounting which are sold separately.

VT No.	Item	U/M
30-0255	Muffler 25" Long	Each
30-0263	Muffler 25" Long	Pair
30-0253	Muffler 27" Long	Each
30-0264	Muffler 27" Long	Pair
30-0254	Muffler 31" Long	Each
30-0369	Muffler Set, 31"	Set
31-2106	Body Clamps, 2 1/2"	Pair
31-2103	Inlet Clamps, pair	



Caution: These exhaust products are not legal for sale or use in California on pollution controlled vehicles. These products are intended for non-highway only.

