



# Breather Gear



**1978-85 Evolution Sifton™ Breather Gear Kit** is constructed of precision ground steel with screen installed. 8 piece steel thrustwasher set included.

VT No. 12-1540



12-1949

**S&S Reed Breather** features three steel reeds that are normally in the closed position, the downward cylinder motion increases crankcase pressure to open the reeds on the up and stroke a vacuum is created. Can be used in Shovel motors with open primary or sealed primary not connected to the oil scavenge system. Replaces stock breather on 1991-99 Evolution motors.

VT No. **Size**  
**12-1949** Stock  
**12-1950** .030 O.S.



A

**A-Big Twin Steel Breather Valve** is a machined breather valve and gear. Designed to replace the stock steel or plastic units. Order 8-piece thrust washers separately. Available in stock duration only with either STD or +.030 O/S outside dimension.

VT No.	Years	Size	Brand
12-9906	1978-99	STD	S&S
12-1537	1978-99	STD	Sifton
12-9957	1978-99	+.030	S&S
12-9909	All	Washer Set	S&S
12-9978	All	Washer Set	Sifton



Installed  
12-1945

**Sifton Air Ramp** fits S&S/Sifton Breather Gear on 1936-99 models to remove

more air and oil from crankcase. Requires removal of screen for installation. Gear not included.

VT No. 12-1945



B 12-1531



C 12-1510

**B-Stock Plastic Breather Valves.**

VT No. **OEM** **Year**  
**12-1531** 25310-82A L1977-99

**C-Thrust Washer Set**, Breather Valve for 1979-99 Big Twin includes one of each size as noted.

VT No.	Fits	Set
12-1510	1979-82	8 Steel
	.110, .115, .120, .125	
	.130, .135, .140, .145	
12-1530	1982-99	8 Plastic
	.130, .135, .140, .145	
	.150, .155, .160, .165	



12-1945

# Oil Pump Cover



**Chrome FLT-FLHR Oil Pump Ribbed Cover** fits on 1987-98 with hardware. VT No. 42-0857



42-0011



42-0530

**Chrome Oil Pump Covers** mount onto the existing bolts on Big Twin models

VT No.	Years
42-0011	1980-91
42-0530	1992-99

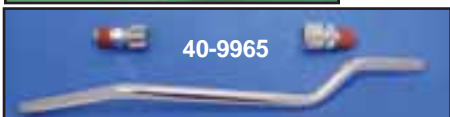


**V-Twin Customizer Dress Up Kit** includes chrome covers for oil filter housing, tappet blocks and oil pump on 1992-99 Big Twin 1340 models.

VT No. 42-0654



42-0887



40-9965

**Chrome Oil Filler Spout** fits 1993-06 FLT models.

VT No.	OEM	Item
42-0887	62470-06	Spout
40-9965	33111-02	Oil Vent Line



**TC-88 Chrome Oil Hose Cover** includes chrome plated mounting hardware. Fits FLHT for 1999-06. VT No. 42-0695



**Oil Filler Spout Cover** will match the chrome trans interface cover. Fits 1999-01 FLT. VT No. 42-0824



**1993-98 FLT/FLHR Top Oil Pump Cover.** VT No. 42-0794



**Engine-Transmission Chrome Interface Cover** is designed to cover oil lines and cleans up the area between the motor and transmission and still allows easy removal of dipstick. Fits 1999-2001. VT No. 42-0698