



# Leather Buddy



**Original Buddy Seat** is a replica of 1940's reproduced by Corbin-Gentry, features stamped & formed steel replica baseplate with all brackets riveted in place. Foam is molded in a smooth contour and is covered with heavy top grade cowhide. Seams are factory style which is accomplished by riveting a leather strip to seat pan, then form fitting the leather top cover in place, finally sewing the top cover to the leather strip for the original look. Accessorized skirt with 1 hole on each side with rosettes, accepts VT No. 31-0507 chrome Handrail.

VT No.	Color	Skirt	Note:
47-0536	Black	3 piece	Includes Handrail
47-0232	Black	3 piece	
47-0520	White	3 piece	

**Original Buddy Seats** available with Fringe or Speedwing skirts. Measures 24" long, 16" wide & features genuine leather skirt, factory steel baseplate. Seats with fringe do not have holes in skirt. Order handrail separately.

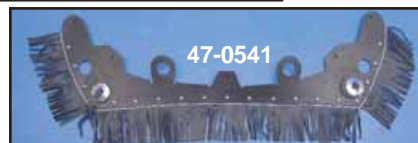
VT No.	Item	Skirt
47-0521	Black Buddy	Fringe
47-0519	White Buddy	Fringe
47-0523	Black Buddy	Speedwing
31-0507	Handrail	Separately



**Original Buddy Seat** is a replica of the 1940's reproduced by Corbin-Gentry, features stamped and formed steel replica baseplate with all brackets riveted in place. Foam is molded in a smooth contour and is covered with heavy top grade cowhide. Seams are factory style which is accomplished by riveting a leather strip to seat pan, then form fitting the leather top cover in place,



and is covered with heavy top grade cowhide. Seams are factory style which is accomplished by riveting a leather strip to seat pan, then form fitting the leather top cover in place,



finally sewing the top cover to the leather strip for the original look. Accessorized skirt with 1 hole on each side with rosettes, accepts VT No. 31-0507 chrome Handrail.

**Heritage Buddy Seat** is a replica of the classic original by Corbin-Gentry replacing 52507-80. Replica formed steel baseplate is fitted with 2 1/4" foam and covered in vinyl or leather. Seat accepts our chrome Handrail and leather accessory skirt, each sold separately. Use on all models with seat post and seat "T", 1930-84 models.

VT No.	Item
47-0538	Black Naugahyde Seat
47-0540	Black Leather Seat
47-0541	Black Leather Skirt
31-0507	Chrome Handrail

VT No.	Color	Skirt
47-0232	Black	3 piece
47-0520	White	3 piece
47-0508	Black	Without
47-0513*	White	Without
47-0514	Brown	Without

\*Note: 47-0513 is not thin style it is Delux Style

Hermann Oak Leather used in seat construction.

