

2000-06



22-0522



22-0523
Chrome Kit

Brake and Shifter Kits. Order footpeg, left and right side separately.

VT No.	Item	Item	Type
22-0514	Kit	Black	Shift
22-0523	Kit	Chrome	Shift
22-0513	Kit	Black	Brake, Right Side
22-0522	Kit	Chrome	Brake

Shift Hardware.

VT No.	OEM	Item
22-0514	Kit	Black
22-0523	Kit	Chrome
17-9300	6057	Nylon Washer
14-0400	11191	O-Ring
21-2074	33660-90B	Shift Lever
21-0111	33683-00	Lever Bracket
10-2561	33708-94	Bracket Bushing
21-2039	33719-79A	Shifter Rod Kit
21-2063	34564-90A	Shift Lever Arm
21-0317	34611-65	Shifter Rubber

V-TWIN KITS
Since 1978
THEY'RE STILL
THE BEST WAY...

10-2561



Shifter Kit



22-1009

5-Speed FXST Replica Forward Shifter Kit is complete with all hardware necessary for installation on 1981-up 5-speed Big Twins. Use in conjunction with our FXST Replica Controls listed on

the opposite page, as all kits place pegs in a forward position. Foot rests on peg while shifting for added comfort. This is an exact stock replacement in chrome for 1984-up FXST. Kit includes chrome heavy duty shifter bracket, inner lever, shifter lever, rod, rubber shift peg and foot peg, all which is display packaged and labeled with detailed instructions and assembly diagram for each model listed below.

VT No.	Fits
22-1004	1981-99 FXR
22-1006	1985-89 FXST
22-1009	1990-99 FXST

Extension Bracket Sets



2000-up FXST-FLST Adapter Brackets allow the use of pre-1999 forward controls on 2000-up TC-88 models.
VT No. 27-0576



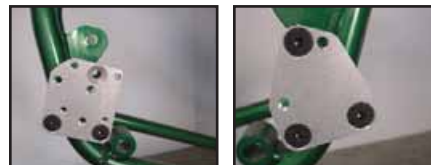
+3 inch Extension Kit fits 2000-06 FXST.
VT No. 22-0305



2000-06 3 inch Extension Kit moves controls 3 inch forward for FXST-FXSTD-FXSTC-FXSTB.
VT No. 27-0566



2 inch Forward Control Extension Bracket will relocate the stock or custom forward controls 2 inch forward on 1936-99 BT models. Note that hoses & linkage will also have to be extended.
VT No. 27-0594



27-0576
Installed