



# FLT Shifter Levers



**Chrome Billet Heel Toe Shift Lever** fits 86-up FLT-FLHT models.

- |               |                |
|---------------|----------------|
| <b>VT No.</b> | <b>Item</b>    |
| 21-0335       | Heel Toe       |
| 21-0673       | Shift Peg (ea) |



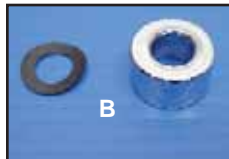
21-0386  
Installed

**Billet Heel-Toe Shifter Set** fits 1986-up FLT-FLHT models.  
**VT No. 21-0386**



**FLT Heel Toe Shift Lever.**  
**VT No. 21-0681**

## Linkage



**FLT Shift Shaft Spacer Kits** replace spacer 5702. Short types are for use with heel/toe shifters, the long type is used to eliminate the heel shifter or for use on single shifter models. VT No. 21-0106 is the grease elimination spacer, VT No. 21-0108 and VT No. 21-0107 includes anti-rattle washer.

- |               |          |                    |
|---------------|----------|--------------------|
| <b>VT No.</b> | <b>#</b> | <b>Type</b>        |
| 21-0106       | A        | Short without Ring |
| 21-0108       | B        | Short with Washer  |
| 21-0107       | C        | Long with Washer   |



**1994-2002 FLT Chrome Spline Cover** fits end of shift shaft.  
**VT No. 44-0047**



**Chrome 1985-up FLT Shift Linkage Kit** includes arms, rods and swivel ends.  
**VT No. 21-2122**



**Chrome Shift Rod Kit** fits 1980-up FLT & 2000-up ST.  
**VT No. 21-2039**



**Chrome Shift Linkage Kit** replaces original shift linkage on 2000-up ST models and 1980-up FLT-

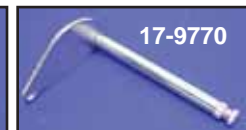
FLHT models and replaces 33814-98A.  
**VT No. 21-0502**



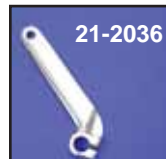
**Greaseable Shifter Shaft** will replace OE shaft to hold extra lube for added lubrication.  
**VT No. 21-0580**



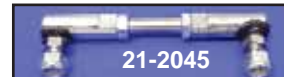
17-9769



17-9770



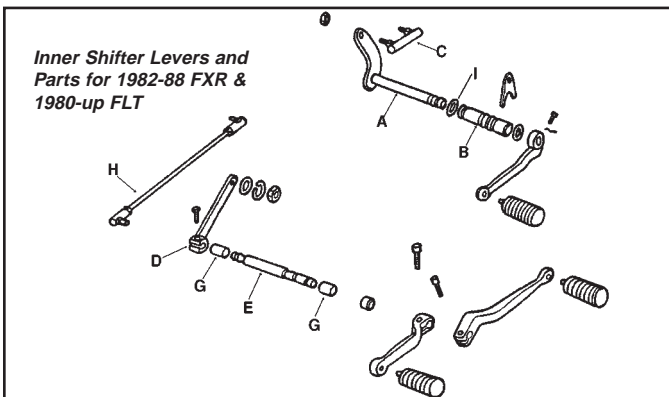
21-2036



21-2045



21-2037



*Inner Shifter Levers and Parts for 1982-88 FXR & 1980-up FLT*

**Inner Shifter Levers & Parts** for 1982-88 FXR; 1980-up FLT.

- | VT No.  | # | OEM       | Model/Item             |
|---------|---|-----------|------------------------|
| 17-9769 | A | 34621-82  | 1982-84 FXR Lever      |
| 10-2489 | B | 60629-82  | 1982-84 FXR Bushing    |
| 17-9770 | A | 34621-84  | 1984-88 FXR Lever      |
| 10-2488 | B | 34632-84  | 1984-up FXR Bushing    |
| 21-2045 | C | 33728-82A | 1982-up FXR, Linkage   |
| 21-2036 | D | 33718-82  | 1982-up FLT Chr Trans  |
| 21-2037 | E | 33709-82  | 1982-up FLT Shaft only |
| 21-0742 |   | 34621-90  | 1991-05 FXD Shaft      |
| 21-0741 |   | 34621-06  | 2006-up FXD Shaft      |

- |         |   |           |                                      |
|---------|---|-----------|--------------------------------------|
| 10-8529 | G | 33713-85  | 1985-99 FLT Bushing                  |
| 10-8752 | G | 42642-00  | 2000-up FLT Bushing                  |
| 17-0966 | F | 33715-85  | 1985-up All Chr. Lever               |
| 42-0722 |   | Chrome    | Fits Above Cover                     |
| 21-2039 | H | 33719-79A | 1980-up FLT Chrome Rod Kit with ends |
| 14-0556 | I | 11148     | 1982-84 FXR Quad                     |
| 14-0538 | I | 11117     | 1984-88 FXR O-Ring                   |