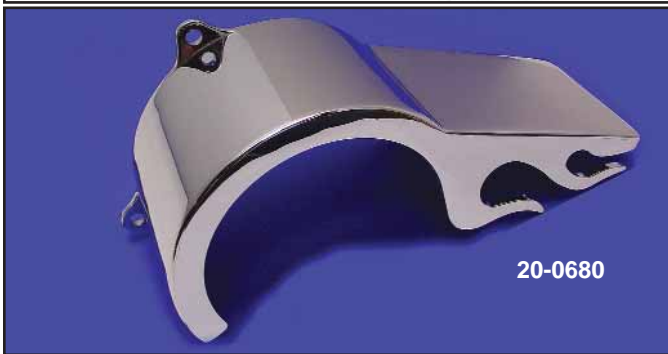
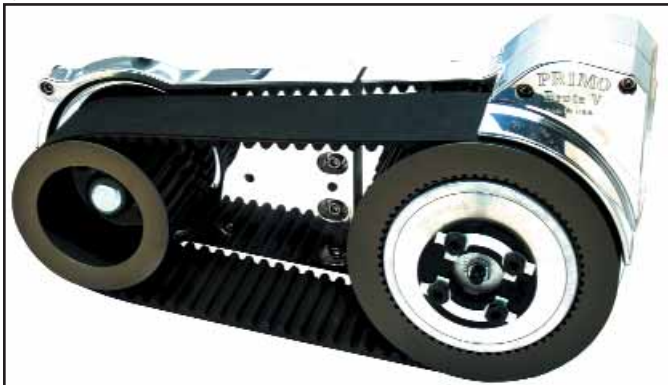


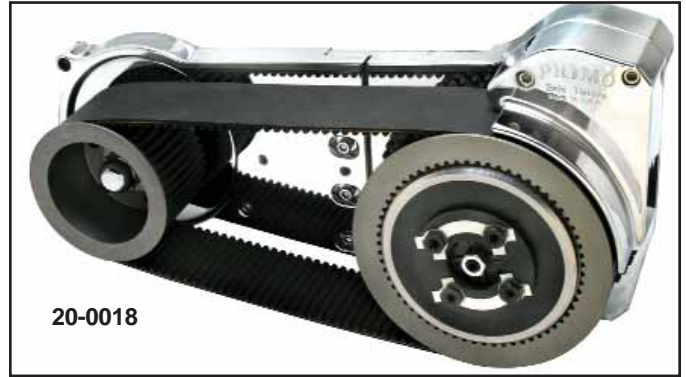
3" Brute IV Primo Combination Belt Drive/Motor Plate Kits includes inner motor plate, clutch pak, starter housing and chrome solid belt guard. Order chrome dome cover and rotor cover separately. Motor plate and starter housing have satin finish.

VT No.	#	Item	Year	Model
20-0209		Combination Kit	2000-up	FXST
20-0125		Replacement Belt for Above		
20-0018		Combination Kit	1990-99	FXST
20-0105		Replacement Belt for Above		
20-0035		Kit	1990-99	
20-0019		Combination Kit	1990-up	FXDG
20-0105		Replacement Belt for Above		
20-0238	A	Alt. Rotor Cover	All	Chrome
20-0226	B	Belt Guard	All	Chrome
20-0239	C	Solid Belt Guard	All	Chrome
20-0225	D	Chrome Dome	All	Chrome
20-0210	E	Half Guard	Chrome	
20-0105		Replacement Belt		
18-0556		Clutch Pak	1990-up	All
20-0032		Ring Gear	102 Tooth	
20-0033		Ring Gear	66 Tooth	

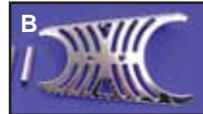
***Note:** Can only be used with 1990-up starter and ratchet lid type transmission.



3" Primo Brute IV



20-0018



3.5" Primo Brute V

Primo Brute V 14mm x 3 1/2 inch wide open "Super Street" Belt Drive. Features diaphragm clutch spring that eliminates spring adjustment while distributing pressure evenly across clutch pak, motor plate, starter housing, hardware and outer guard.

VT No.	Fits	Replacement Belt
20-0075	2000-up FXST	20-0126
20-0076	1990-99 FXST	20-0126

***Note** Can only be use with 1990-up starter.



Belt Guard Mounts to 3.5" Brute IV and V units.

VT No.	Style	Width
20-0680	Flame	3.5
20-0682	Smooth	3.5
20-0683	Flame	3
20-0684	Smooth	3