



Rear Sprockets

9.8mm Offset



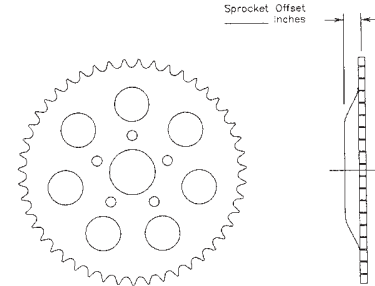
Chrome Lazer Design Rear Sprockets with 9.8mm offset for 1973-84 FX-FL or flat.

Offset	Flat	Teeth
19-0129	19-0132	48
19-0130	19-0133	49
19-0131	19-0134	51



Chrome 5-Spoke Sprockets. Offset models have 9.8mm offset.

Offset	Flat	Teeth
1973-99		
19-0672	19-0674	48
19-0673	19-0675	51
2000-up		
19-0218	19-0251	48
19-0250	19-0221	51



19-0412



19-0412

Pulley Spacers provide offset when required, with 7/16" bolt holes. Each disc measures 2 1/16" I.D. with 4 5/16" O.D. For 1980-99.

VT No.	Thick	Material	VT No.	Thick	Material
23-0320*	1/16"	Steel	19-0411	3/8"	Billet
19-0128	3/16"	Steel	19-0412	1/2"	Billet
19-0452	3/16"	Billet	19-2001	5/8"	Billet
19-0413	1/4"	Steel	*Note: Use when installing flat rotor on 1973-75 Big Twin.		
19-0414	5/16"	Steel			

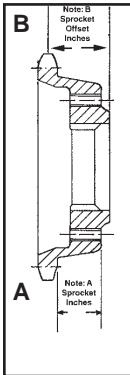
2000-up Rear Pulley-Disc Spacers with 2.25" I.D. Sold as each.

VT No.	Thick
20-0346	1/16"
20-0347	.125
20-0343	.200
20-0344	.250
20-0345	.300



Note: Offset is measured from sprocket bolt mount surface to center line of teeth as shown.

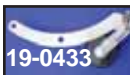
Trans Sprockets



19-0224 .900 Offset

Offset Transmission Sprockets fit 1994-2003 Big Twin for chain drive conversion. **.900 offset** is the maximum offset without any modification to the stock inner primary, to allow the installation of a 180 tire, without transmission offset. Fender modification may be required. ***Note:** Includes sprocket spacer.

A	.250	.500"	.810"	.900"	Teeth
	19-0210	19-0163*	—	—	21
	19-0211	19-0164*	19-0214	—	22
	19-0212	19-0402*	19-0215	19-0223	23
	19-0213	19-0122*	19-0216	19-0224	24
B	.940"	.715"	1.236"	1.350	

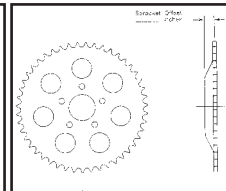


Rear Chain Tensioner by LBV reduces chain vibration and frequency of adjustment by utilizing a durable urethane roller which revolves on sealed bearings mounted on stainless anchor plates.

VT No.	Year	Model
19-0433	1984-85	FXST
19-0436	Roller only	All



***Note:** To use on 1994-up models, **Drive Sprocket Spacer & Seal** must be changed to Pre-94 type. Seal: Replaces 12050 VT No. 14-0157 Spacer: Replaces 33334-84 VT No. 17-9851



Offset Sprocket Kit with .500" offset for FXST and FXR.

Allows installation of 150 series tire by converting from belt to chain drive on 1986-99 FXST and 1985-94 FXR models. The stock final drive ratio is 2.1875 with belt drive and then new drive ratio will be 2.125 when used with 24 tooth front sprocket and 51 tooth rear sprocket and 2.00 when used with a 48 tooth rear sprocket.

VT No.	Item	Teeth
19-0163*	Drive Sprocket	21T
19-0164*	Drive Sprocket	22T
19-0402	Drive Sprocket	23T
19-0166*	Drive Sprocket	24T
19-0122	Drive Sprocket	24T
19-0128	Rear Sprocket Spacer	3/16"
19-0021	Rear Sprocket FXR	48T
19-0022	Rear Sprocket FXR	51T
19-0037	Rear Sprocket FXST	48T
19-0041	Rear Sprocket FXST	51T