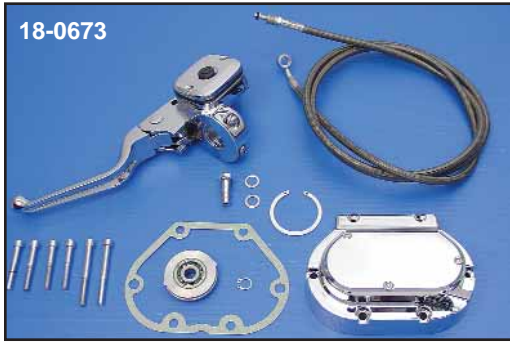
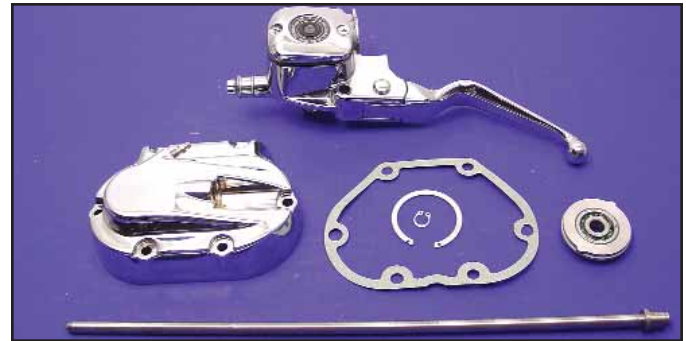




Hydraulic Clutch



18-0673
1996-up Big Twin Hydraulic Clutch Handle Kit includes chrome handle assembly, chrome trans side cover, rod and line. 18-0673 includes hydraulic handle which fits 1" bars.
VT No. 18-0673



1999-up TC-88 Hydraulic Clutch Kit. Order line separately. Fits 1" and 1.125 bars.
VT No. 18-0562

Components



22-0377



22-0378



26-0590

Chrome Smooth-Contour Control Kit features a hidden underside mounting on the switch housings for an unobstructed smooth, rounded surface on the top housing. Switch housings use stock or chrome rounded switches (introduced on 1996 models). Complete kits include clutch and brake levers, master cylinder, hydraulic clutch, switch housings, brackets and hardware. Master cylinder is 11/16" bore, hydraulic single disc. Clutch handle is 11/16" bore.

VT No.	Style
22-0377	Milled
22-0378	Contour
26-0590	Lever Set



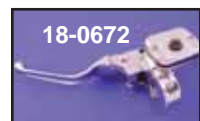
18-0675 Installed



18-0675



18-0362



18-0672



18-0579



18-0570, 18-0574



18-0571

Components

- 18-0672** Complete Hydraulic Handle
- 18-0362** Cover Only 1999-up TC-88
- 18-0675** Cover Only 1987-05
- 18-0676** Cam Cover, 2006-up 6 Speed
- 18-0570** Clutch Rod 1999-up 15.25"
- 18-0571** Hydraulic Clutch Fitting
- 18-0579** Throw-out Bearing Kit
- 18-0572** Clutch Rod, 1987-05 15.5" Long



22-0879

Custom Hydraulic Control Kits will utilize 1996-up switches. Both feature 9/16" master cylinders. Matching throttle housing spacer for left side included.

VT No. 22-0879