



Evo Pushrod Covers & Seals



11-0909
Installed



V-Twin Chrome Pushrod Cover Kits in stock style gives all the parts needed for complete installation. All are 16 piece kits.
11-0909 1984-99 Evo
11-0920 1984-99 Evo (Gold)



Chrome Head and Spark Plug Cover fits 1986-99 Evo models. Covers are held in place by rubber inserts supplied.
VT No. 42-0929

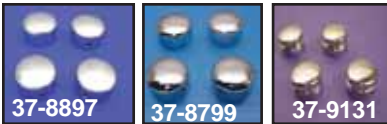


Chrome Pushrod Cover Set with chrome lifter base covers as a complete dress up kit for Big Twins.
VT No. 42-0903
 (1984-99 Evo)



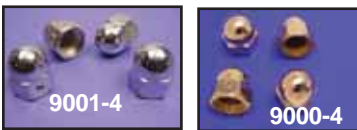
Chrome Billet Pushrod Cover Kit fits 1984-99 Evo models.
VT No. 11-0945

Head Bolt Cover Sets



Chrome Head Bolt Covers fit BT models.

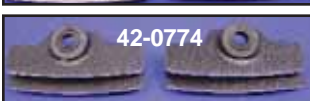
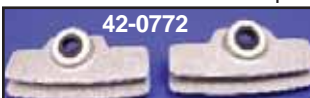
VT No.	Type	Year
37-8897	Smooth	1983-84
37-9131	Grooved	1985-99
37-8799	Smooth	1985-99



Headbolt Covers fit over 12 point headbolts on 1986-99 Evo models. Evo styles include 4 pieces for left side only. Styles include hex acorn or cap with a

gold or chrome finish. Allen wrench included.

Chrome	Gold	Style
9000-4	9001-4	Acorn
9002-4	—	Cap



Head Lockers fit Big Twin Evo 1340 available shot peened natural aluminum or black with highlighted fin edge. Sold in a pair with two set screws included to install.

Aluminum	Black	Year
42-0772	42-0774	1986-91
42-0773	42-0775	1992-99



2262-4
Installed



2262-4



Evolution/Twin Cam Head Bolt Cover.

Headbolt covers to hide dull 12 point headbolts on late 1985-up FL-FX. Installation with set screw.

VT No.	Style
2024-4	Hex Dome
2262-4	Spike



Chrome Head and Spark Plug Cover fits 1986-99 Evo models. Covers are held in place by rubber inserts supplied.
VT No. 42-0929