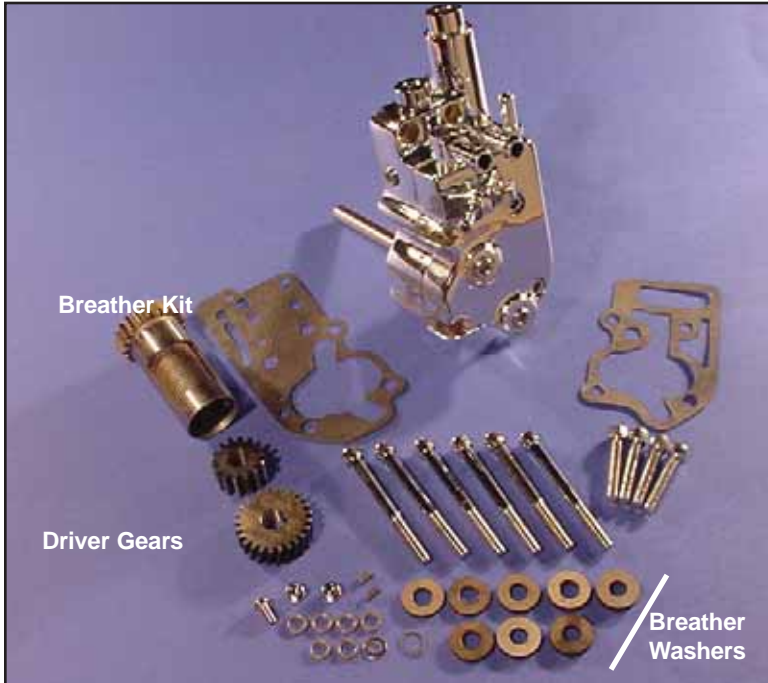




Big Twin Oil Pump Assembly



Sifton™ Oil Pump Assembly features improved oil pump pressure regulation that will ensure correct oiling to all areas of BT engines. This pump kit includes all necessary fittings, snap rings, keys, gaskets and mounting bolts. Can be used on either chain drive or belt drive models.

Pump	Pump W/Breather	Years	Finish
12-9971	12-9802	1984-91	Polish
12-9972	12-9803	1984-91	Chrome
12-9975	12-9804	1992-99	Polish
12-9976	12-9805	1992-99	Chrome
15-0657	Gasket	1973-91	Mylar
15-0658	Gasket	1973-91	Paper
15-0362	Gasket	1992-99	Mylar
15-0363	Gasket	1992-99	Paper



Oil Pump Mount Kits for Big Twins.

VT No.	Years	Type
8744-12*	1978-91	Chrome, Stock
9787-12*	1978-91	Zinc, Stock
8747-12	1978-91	Allen
7827-12*	1978-91	Chrome Acorn
9763-16*	1992-99	Acorn Style
9762-16	1992-99	Allen Style
37-9000	1992-99	Chrome Acorn
37-9001	1992-99	Chrome Allen

*Note: Includes studs where required.



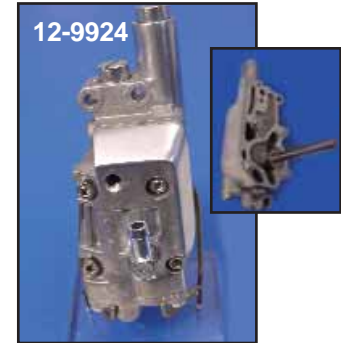
Sifton Oil Pump features geo-rotor compact cad/cam design, modular billet aluminum construction, superior scavenging, increased feed flow rate which eliminates wet-sumping in crankcase. Fits 1992-99.

VT No. 12-0859



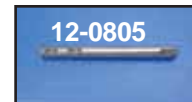
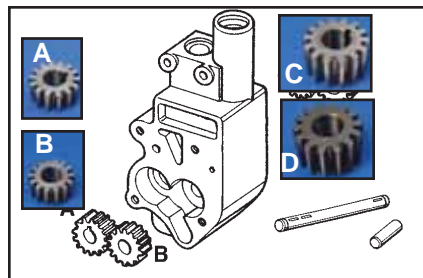
Sifton Big Twin Oil Pump Drive Shaft Kit includes 3 keys, shaft gear, bushing and snap ring. Fits 1973-99.

VT No. 12-0810



Factory Style Oil Pumps are complete and assembled, including all gears and shafts for years listed. Breather gears not included.

VT No.	OEM	Years
12-9900	26190-73	1973-91
12-9924	26053-92	1992-99
16-1843	Tool	Drill Fixture



Oil Pump Drive Shafts fits 1970-99 BT, replaces .26346-70.

VT No. 12-0805

Big Twin Oil Pump Gears fit 1968-99 stock type and some aftermarket units.

VT No.	#	OEM	Type	Brand
12-1434	C	26315-68A	Return Drive	Jims
12-1420	D	26317-68A	Return Idler	V-Twin
12-1435	D	26317-68A	Return Idler	Jims
12-1436	B	26326-62A	Feed Idler	Jims
12-1437	A	26328-74	Feed Drive	Jims

Chain Oil Adjuster Screws sold each.

VT No.	OEM	Fits	Head
12-2523	63610-70	1970-99 FLH	Slot

Oil Pump Seals.

James	GB No.	OEM	Fits
14-0623	14-0114	26227-58	1968-99 BT

Oil Pump Snap Rings.

VT No.	OEM	Fits
12-0901	11002	1970-up Big Twin