



42-0433
Chrome Replica Foot Shift Lever Cover fit 1986-99 FLST.
 Replaces 33642-89.
VT No. 42-0433



Shifter Bracket Bushing

VT No.	OEM	Fits
10-2511	33638-70	1985-93 FXST
10-2561	33708-94	1994-up FXST-FLST



Chrome Jiffy Stand and Shift Mount Plate Bolt Kit to attach assembly to left side of frame.

VT No.	Type	Year
7803-11	Acorn	1936-99
9617-18	Hex	1936-99
2049-18	Allen	2000-up

Shifter Arms



Chrome Inner Shifter Levers fit through frame mount shifter plates on Big Twins 21-2074, 21-2065 feature splined ends.

VT No.	OEM	Year/Model
21-2065	33668-90A	1986-up FLST
21-2074	33660-90B	1990-99 FXST



2000-up Inner Shift Levers for FXST.

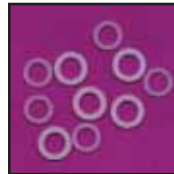
VT No.	Type
21-0675	Solid
21-0676	Slotted

Shifter Bracket



Chrome Frame Mount Shifter Brackets as stock replacements or when installing forward controls. The 21-0105 and 21-0101 are the exact FXST-FXWG type which features footpeg boss welded to shift plate, stock on 1980-up models which have corresponding brake unit. Order inner shift arm separately.

VT No.	OEM	Style	Fits
21-0101	33683-80	Heavy	84-89 FXST
21-0105	33683-90A	Stock	90-99 FXST
21-2061	33630-90	Stock	86-99 FLST
37-9104	Nylon		Inner Outer Washer Set



V-Twin Shifter Kits include 2 Nylon washers to reduce vibration at inner shift arm and pedal. Available separately as 5 set pack.
VT No. 37-9104

Rod Ends



Ball End Swivel with 5/16 x 24 thread.

VT No.	Thread
21-2077	Left Hand
21-2078	Right Hand



Forked Rod End Clevis is threaded 5/16 x 24 for use on shifter or brake rods.

VT No.	Pin Size
21-2033	1/4
49-3065	5/16



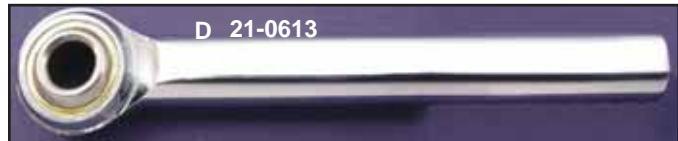
Clevis Pins, zinc plated includes cotter pins and washers.

VT No.	OEM	Use
23-0421	42269-30	1930-69 Brakes, 1982-up Brake 1952-84 Shifter
21-1986	42269-70	1970-81 Brakes



Shift Rod Jam Nut Set features tapered design to cover excess rod thread, pair, 5/16 x 24 thread.

VT No. 37-0863



Self-Aligning Rod Ends. Heim joint type swivel allows alignment up to 28° off center, self lubricating brass ball socket available for shifter or brake rod ends, 5/16 x 24 or with 5/16 hole. 21-2016 has 5/16 x 24 stud.

VT No.	#
21-0613	D
21-0610	C
21-0611	C
21-2016	A
21-2020	B