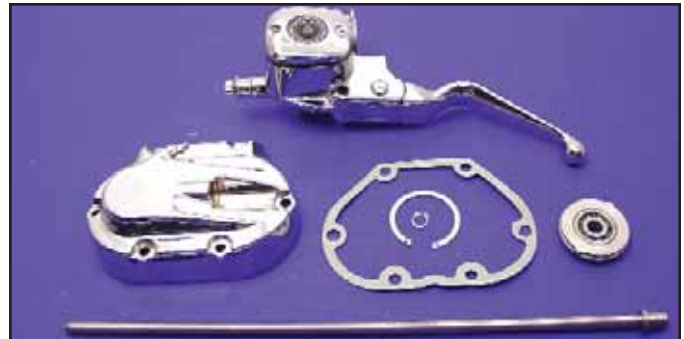




1996-up Big Twin Hydraulic Clutch Handle Kit includes chrome handle assembly, chrome trans side cover, rod and line. 18-0673 includes hydraulic handle which fits 1" bars. VT No. 18-0673

# Hydraulic Clutch



1999-up TC-88 Hydraulic Clutch Kit. Order line separately. Fits 1" and 1.125 bars. VT No. 18-0562

## Components



22-0377



22-0378



26-0590

**Chrome Smooth-Contour Control Kit** features a hidden underside mounting on the switch housings for an unobstructed smooth, rounded surface on the top housing. Switch housings use stock or chrome rounded switches (introduced on 1996 models). Complete kits include clutch and brake levers, master cylinder, hydraulic clutch, switch housings, brackets and hardware. Master cylinder is 11/16" bore, hydraulic single disc. Clutch handle is 11/16" bore.

VT No.	Style
22-0377	Milled
22-0378	Contour
26-0590	Lever Set



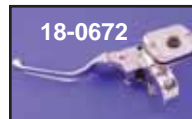
18-0675 Installed



18-0675



18-0362



18-0672



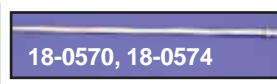
18-0579



18-0570



18-0571



18-0570, 18-0574

### Components

- 18-0672 Complete Hydraulic Handle
- 18-0362 Cover Only 1999-up TC-88
- 18-0675 Cover Only 1987-05
- 18-0570 Clutch Rod 1999-up 15.25"
- 18-0571 Hydraulic Clutch Fitting
- 26-0590 Handle Set
- 18-0579 Throw-out Bearing Kit
- 18-0574 Clutch Rod, 1987-05 15.5" Long



22-0879

**Custom Control Kits** will utilize 1996-up switches. Both feature 9/16" master cylinders. Matching throttle housing spacer for left side included.

- VT No. Type
- 22-0879 Hydraulic Clutch