



Evo Rocker Cover



Chrome V² Rocker Cover Sets are precision die-cast covers that are machined. Polished and chrome plated. Six piece complete set includes all necessary gaskets for installation for both heads.

VT No.	Fits
42-0754	1984-91
42-0787	1992-99

S&S Two Piece Chrome Rocker Covers fit all 1984-up Evolution Big Twins. Both vented out of the crankcase or through the head type. Umbrella valves included for use with 1993-99 cylinder heads. Each kit includes front and rear cover assemblies complete with base and top cover, rocker shaft supports, gaskets and mounting hardware.

VT No.	Item
11-4050	Rocker Cover Set
15-1221	Gasket Set



Head Bolt Cover Sets



Chrome Head Bolt Covers fit BT models.

VT No.	Type	Year
37-8897	Smooth	1983-84
37-9131	Grooved	1985-99
37-8799	Smooth	1985-99



Headbolt Covers fit over 12 point headbolts on 1986-99 Ev models. Evo styles include 4 pieces for left side only. Styles include hex acorn or cap with a

gold or chrome finish. Allen wrench included.

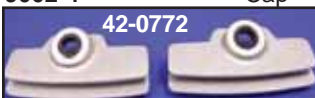
Chrome	Gold	Style	
9000-4	9001-4	Acorn	9001-4
9002-4	—	Cap	



Evolution/Twin Cam Head Bolt Cover. Headbolt covers to hide dull 12 point headbolts on late 1985-up FL-FX. Installation with set screw.

VT No.	Style
2024-4	Hex Dome
2262-4	Spike

2024-4



Head Lockers fit Big Twin Evo 1340 available shot peened natural aluminum or black with highlighted fin edge. Sold in a pair with two set screws included to install.

Aluminum	Black	Year
42-0772	42-0774	1986-91
42-0773	42-0775	1992-99



Chrome Head and Spark Plug Cover fits 1986-99 Ev models. Covers are held in place by rubber inserts supplied.

VT No. 42-0929